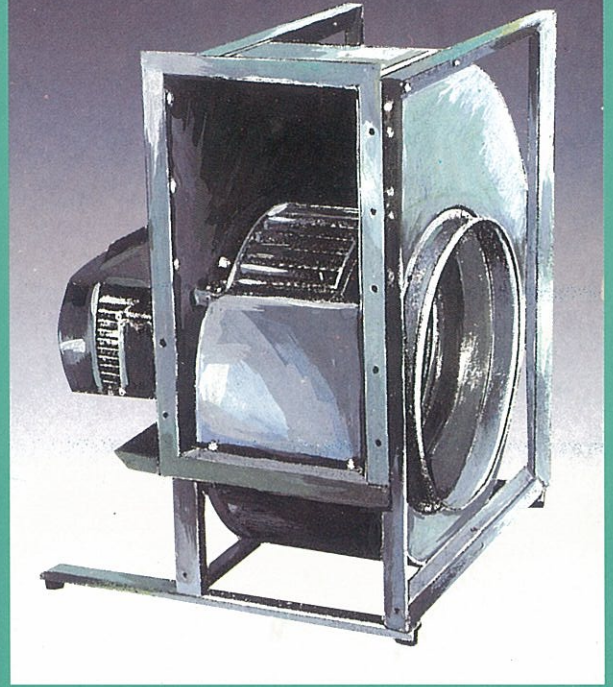


Golden

單吸多翼式風機

SINGLE INLET SIROCCO FAN



Golden

單吸多翼式風機

SINGLE INLET SIROCCO FAN

G-05

國祥冷凍機械公司承製

example of characteristics curve reading

V = 4.400 m³/h
 Ht = 44 mm H₂O
 Hd = 8 mm H₂O
 n = 875 t/min
 Pv = 0.9 Kw
 η = 57%
 LPS = 74.5 db(a)
 c = 11.5 m/sec.

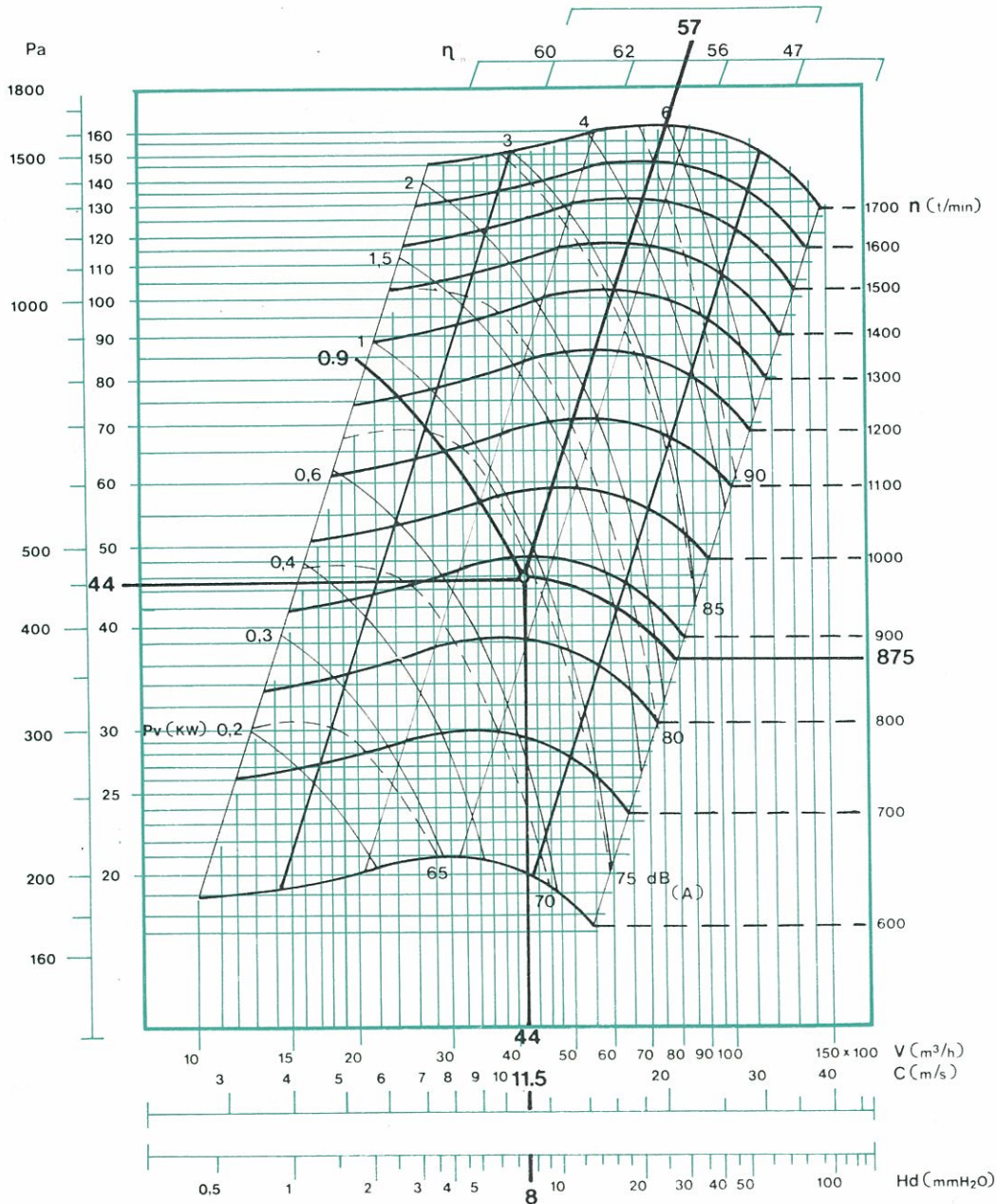
指示曲線示意圖例

Ht : 總壓力
 V : 容量
 Hd : 動壓
 h : 葉片之轉速
 g : 效率
 Pa : 負荷力
 dB(Δ) : 噪音標準
 C : 排氣速度
 注意：風機於所建議之操作區以外運作則可能產生不穩定之情形

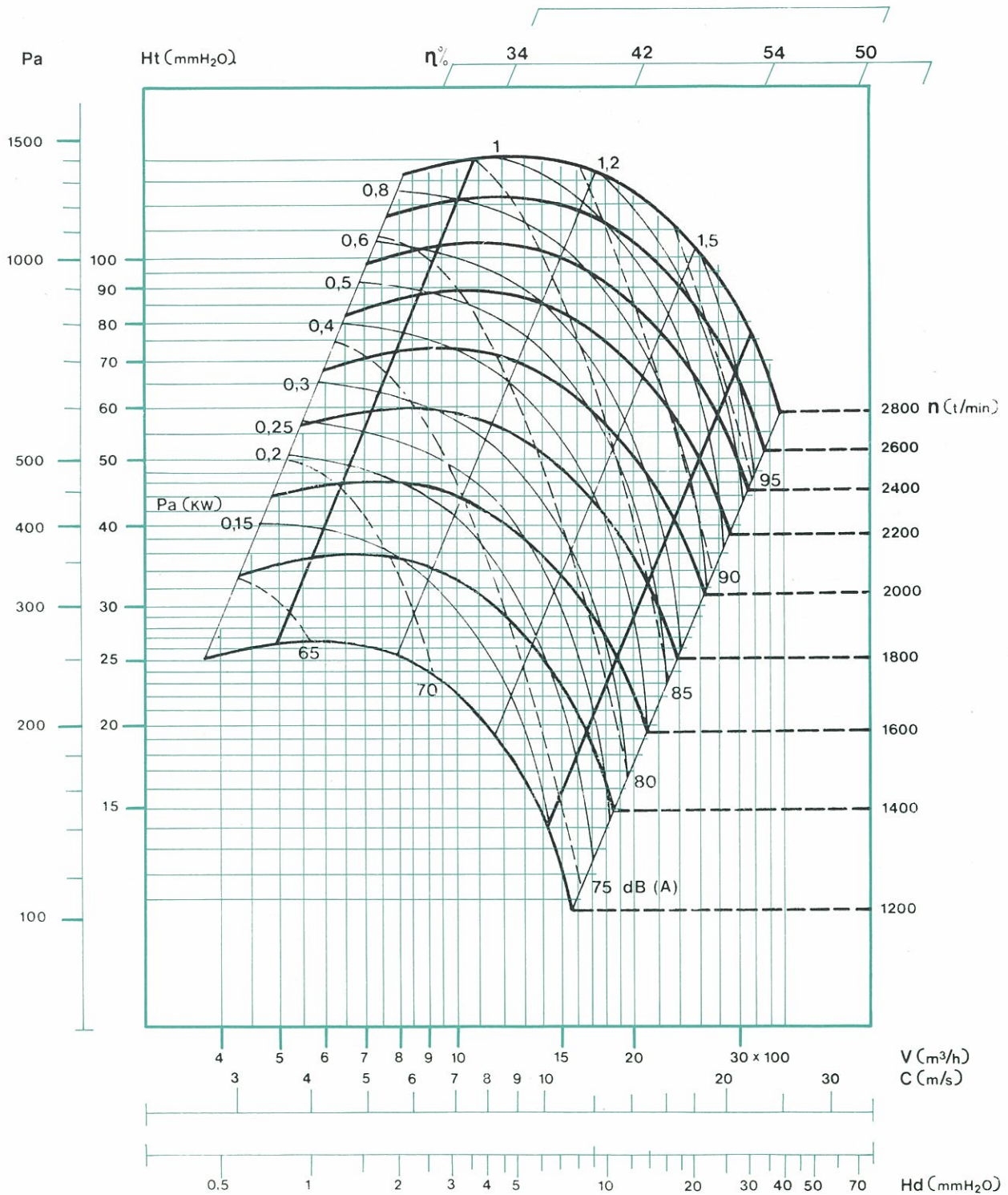
Ht Total pressure
 V Capacity
 Hd Dynamic pressure
 n r.p.m. of the impeller
 η Efficiency
 Pa Absorbed power
 dB(Δ) Sound level
 c Velocity of exhaust

NB.
 Outside the suggested operational area instability factors in the fan performance can appear.

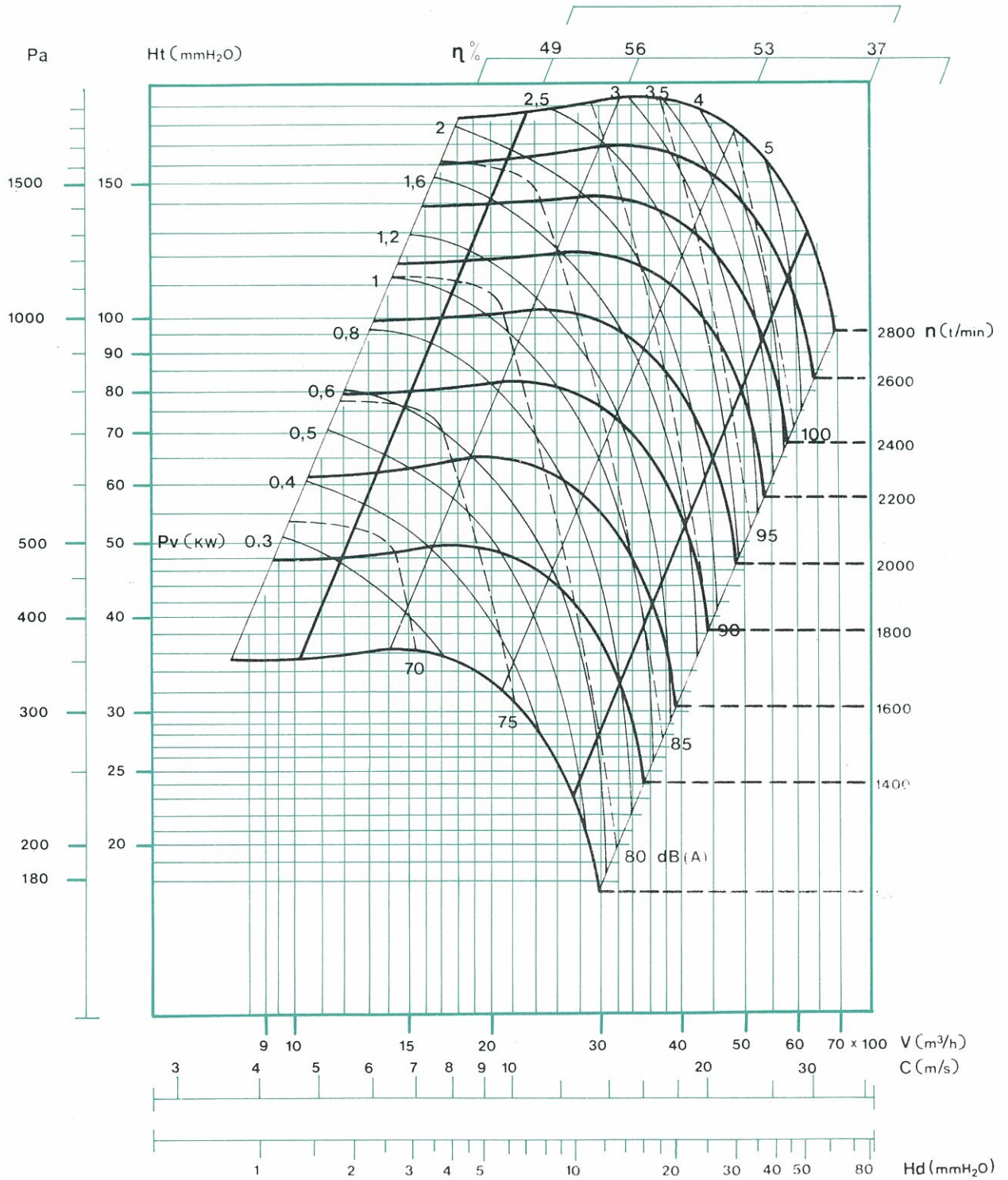
GS15-8



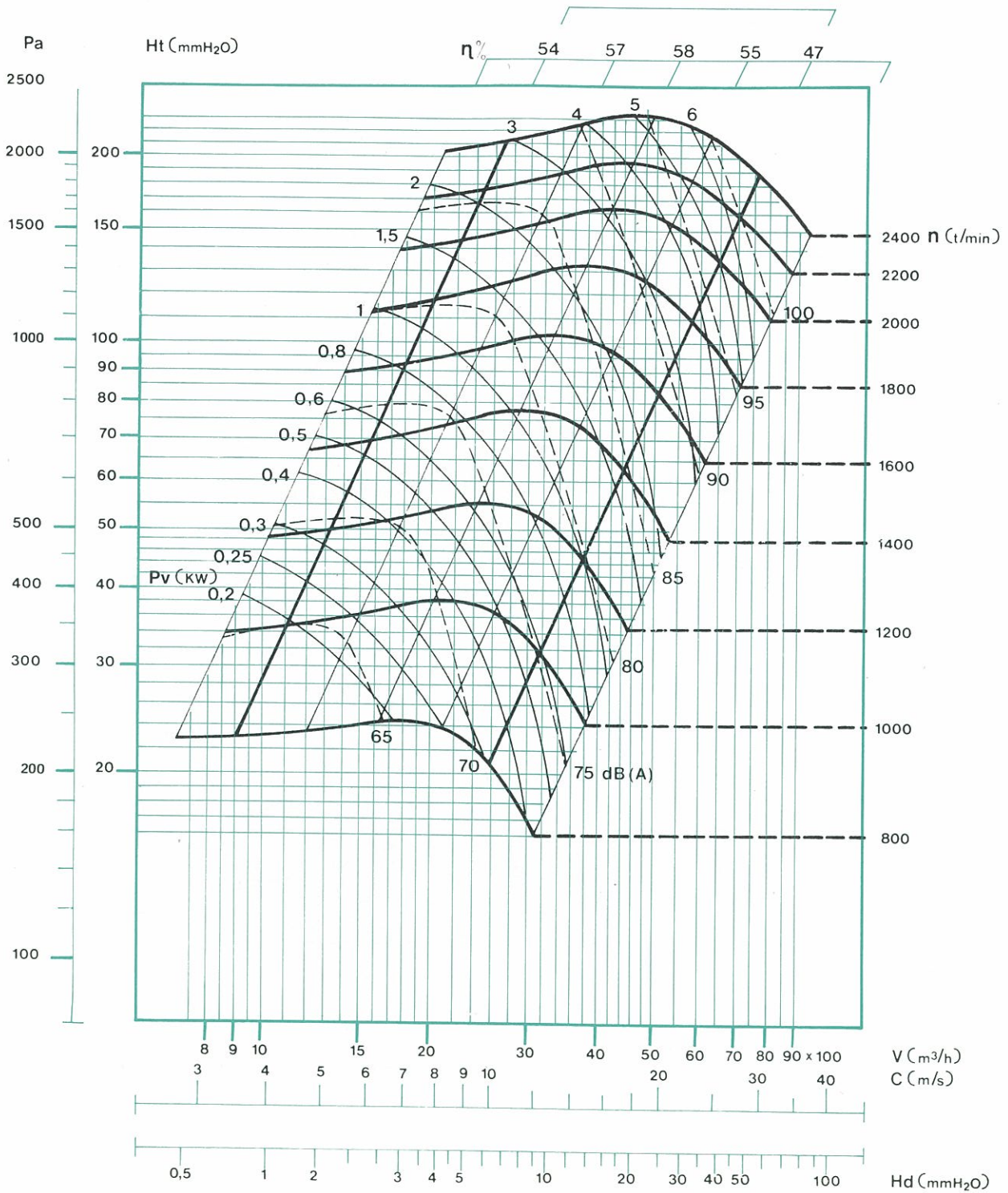
GS9-4



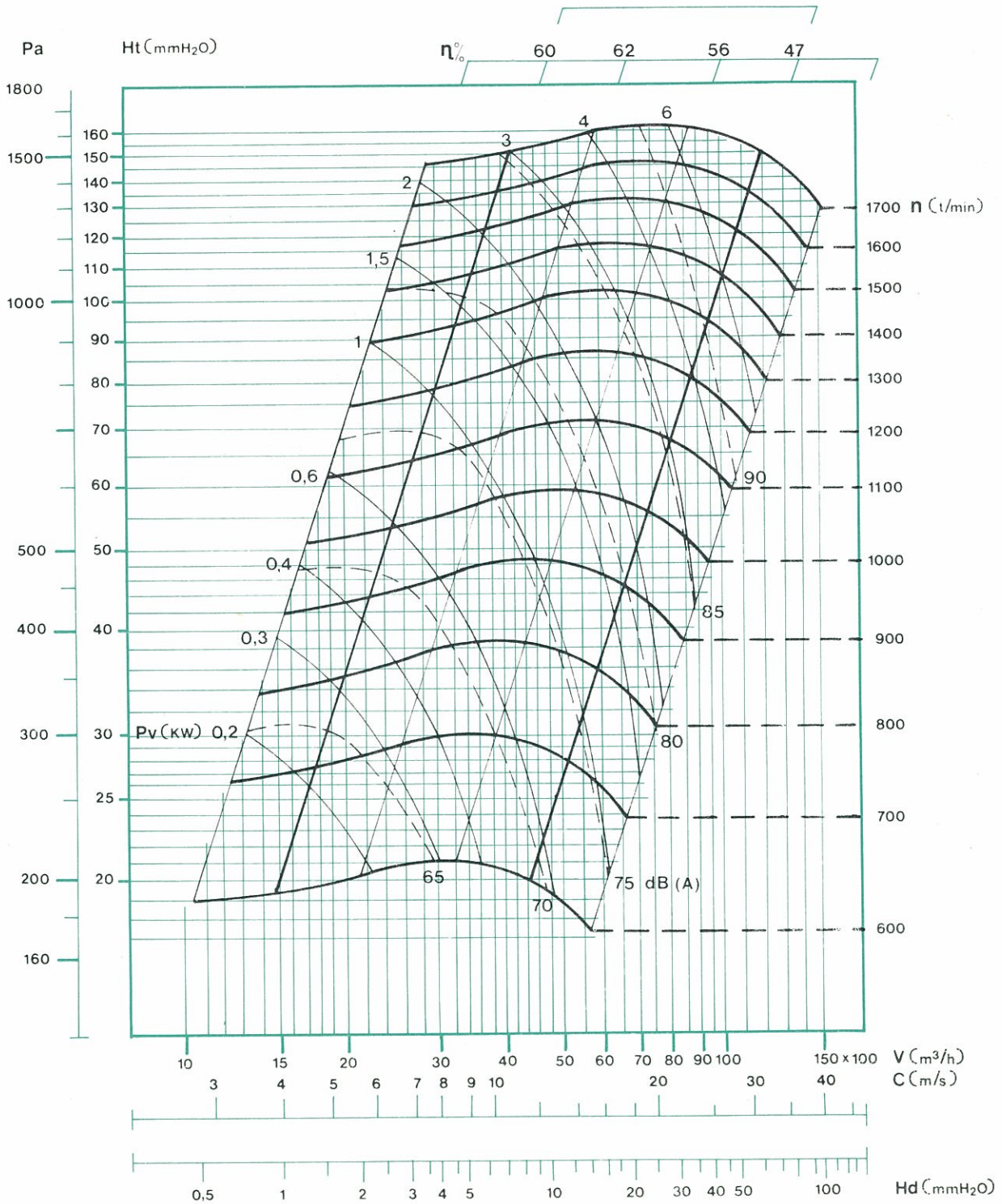
GS10-6



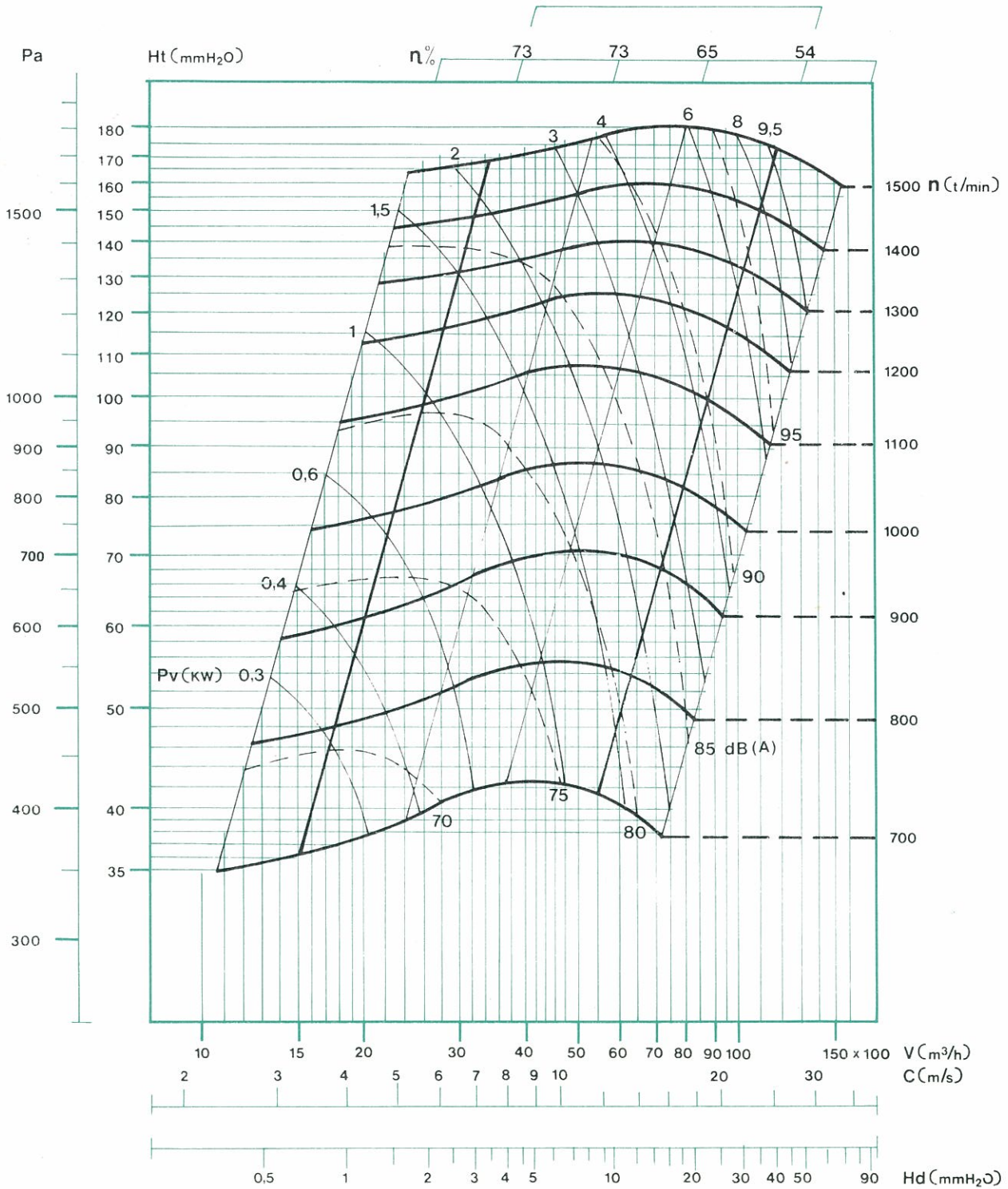
GS12-6



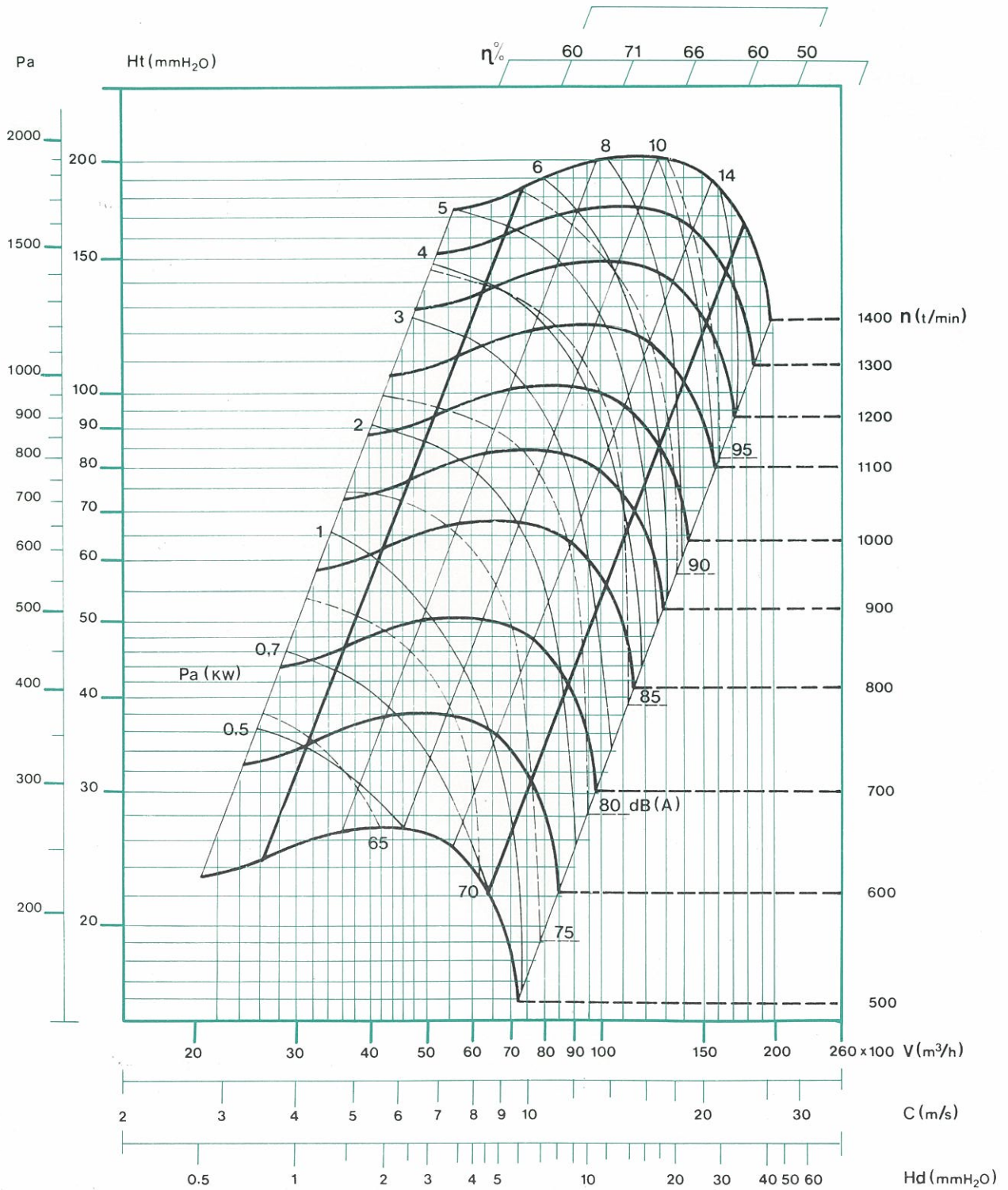
GS15-8



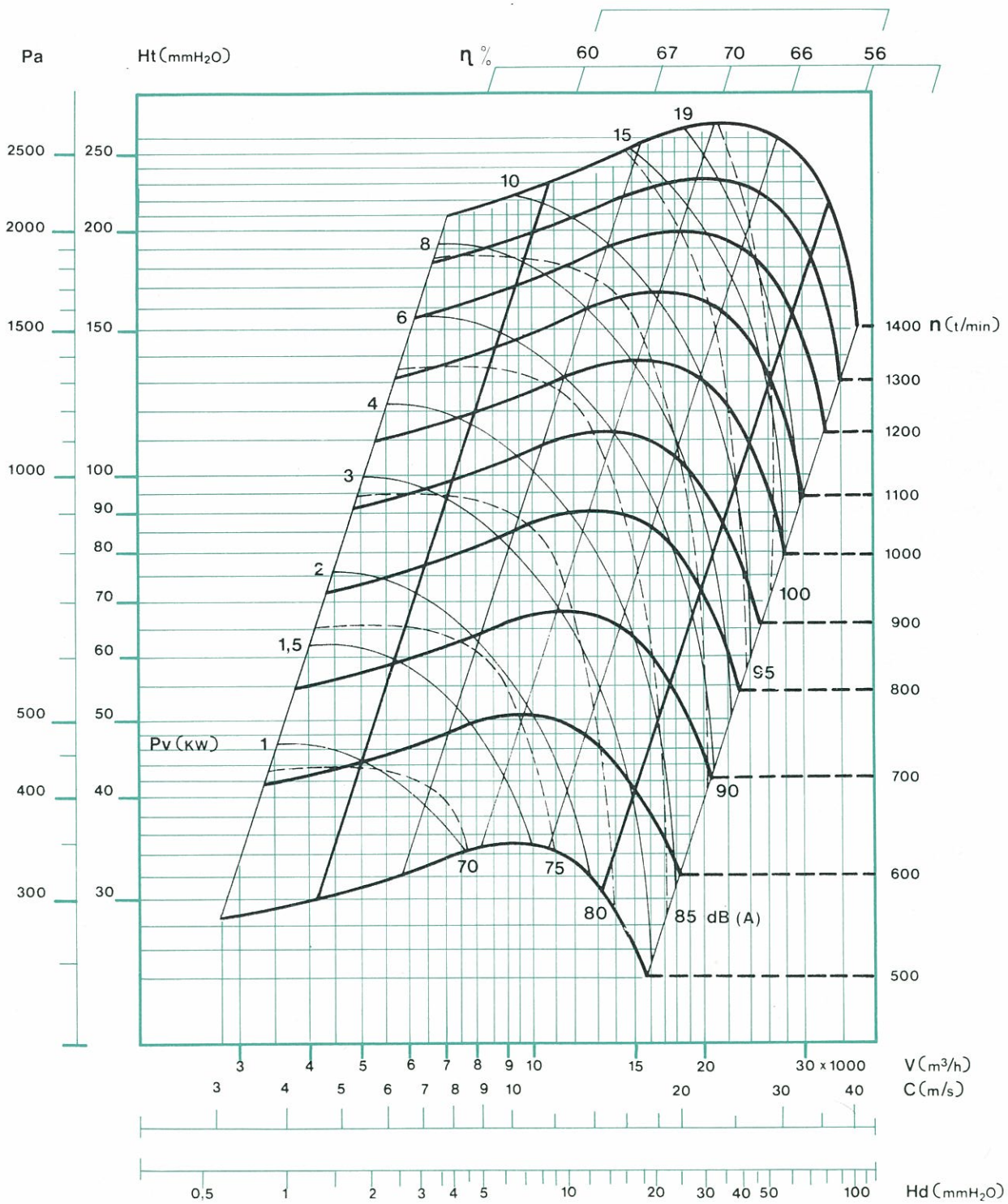
GS18-8



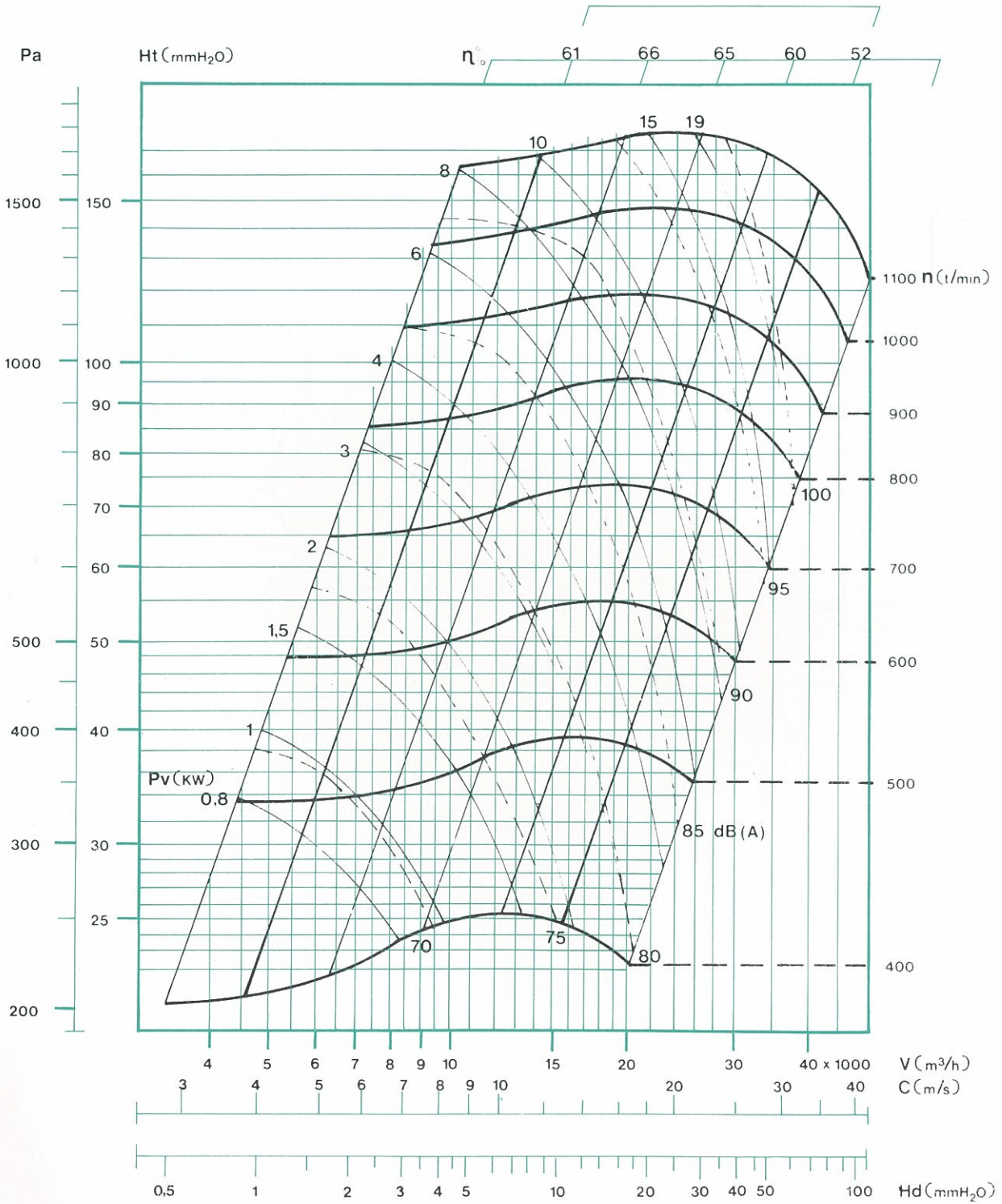
GS20-10



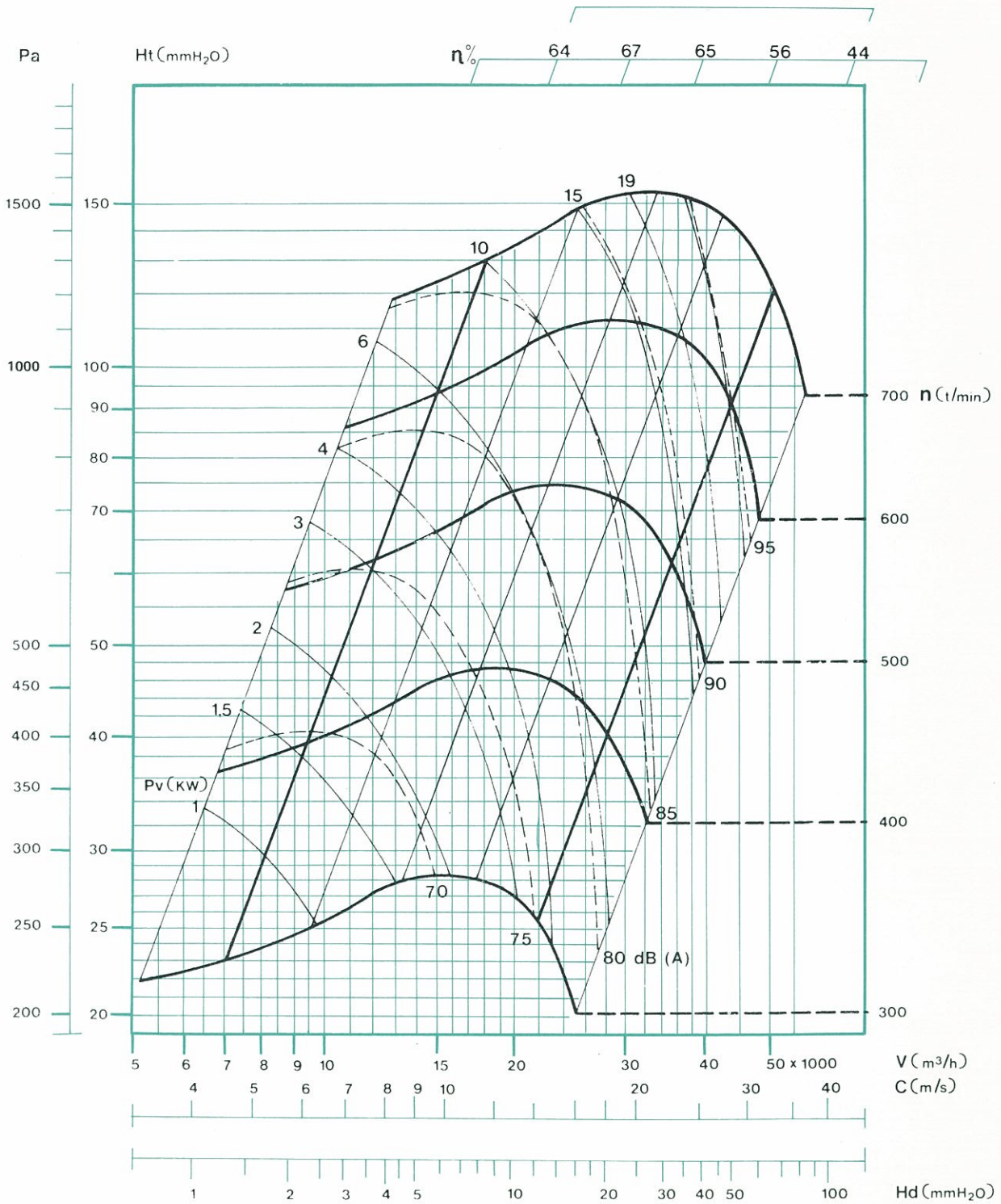
GS22-11



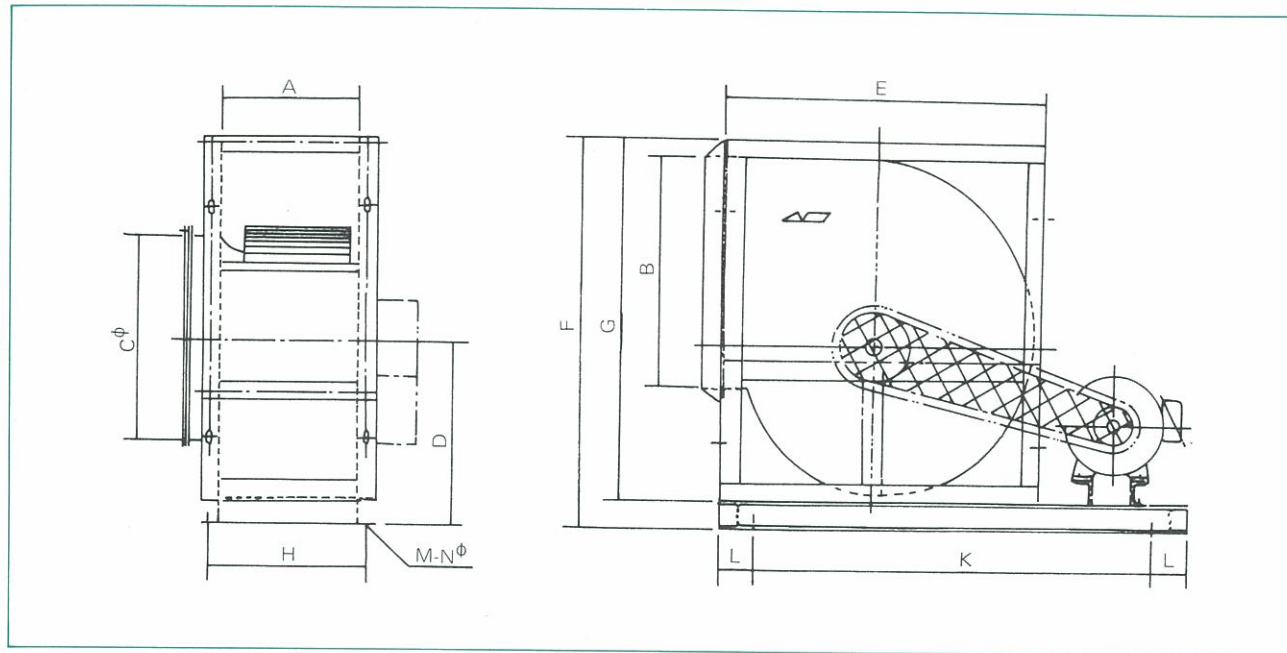
GS25-13



GS30-14



外型尺寸



型號	A	B	Cφ	D	E	F	G	H	K	L	M		Nφ	X	適用馬力 (HP)
											吊	地			
GS9-4	154	266	250	249	385	495	420	188	560	75	8	4	13	760	½ ~ 2
GS10-6	214	292	280	270	430	550	475	248	600	75	8	4	13	800	''
GS12-6	214	344	330	305	495	630	555	248	700	75	8	4	13	900	1 ~ 3
GS15-8	264	408	390	347	575	720	645	298	800	75	8	4	17	1100	1 ~ 5
GS18-8	274	482	460	406	690	850	775	308	950	75	8	6	17	1250	2 ~ 7½
GS20-10	334	632	563	469	830	1030	955	378	1150	75	8	6	17	1450	3 ~ 15
GS22-11	368	698	609	510	905	1125	1050	412	1250	75	8	6	17	1550	''
GS25-13	424	800	690	550	1010	1255	1180	468	1350	75	8	6	17	1650	''
GS28-14	454	874	770	641	1120	1385	1310	510	1500	75	8	6	17	1800	''
GS30-14	454	942	810	683	1200	1485	1410	510	1650	75	8	6	17	1950	5 ~ 15

操作界線

	GS9-4	GS10-6	GS12-6	GS15-8	GS18-8	GS20-10	GS22-11	GS25-13	GS30-14
風扇軸最大負擔馬力 : KW	2.3	3.7	5.5	5.5	7.5	11	11	11	11
迴轉葉輪最大轉矩 : Kgm	5	5	10	10	10	20	20	25	30
迴轉葉輪最大轉數 : RPM	2800	2800	2400	1700	1500	1400	1400	1100	800
軸承座最大負荷 : Kg	110	110	150	150	150	450	450	450	550
最低氣溫限制	85	85	85	85	85	100	100	100	100

國祥冷凍機械股份有限公司
KING MACHINERY CO., LTD.
高鼎股份有限公司
GOLDEN COMPANY LTD.

總公司

地址：台北市敦化南路678號 4樓
電話：(02) 7556171 / 電話傳真：(02) 7059195

工廠

地址：桃園縣龜山鄉大崗村頂湖路38號
電話：(03) 3281226-8 / 電話傳真：(03) 3282822